

# WA Editor v3.00 - Manual

## Tutorial 2 – Tweaking our Adventure

For our second tutorial, let's create a new adventure using some of the advanced options.

Again, load up the 3D Editor. Let's start by reducing the size of the level to 15x15 (from its default 40x40). Both the Width and Height lines have arrows to their left and right. Left-clicking on the arrows will always increase the Width/Height; right-clicking will decrease it.



In particular:

Left-clicking on the arrows to the left of the width will add tiles to the left side of the level.

Left-clicking on the arrows to the right of the width will add tiles to the right side of the level.

Left-clicking on the arrows to the left of the height will add tiles to the top side of the level.

Left-clicking on the arrows to the right of the height will add tiles to the bottom side of the level.

Right-clicking any of the above will delete a row/column of tiles from the indicated side.

(Side note: when adding tiles to a side, there are two options - using the currently select tile, or duplicating an existing row/column - the "BORDER CURRENT/BORDER DUPLICATE" button allows you to make that selection).

For an empty level, it doesn't matter, so right click on any of the arrows until the size is reduced to 15x15.

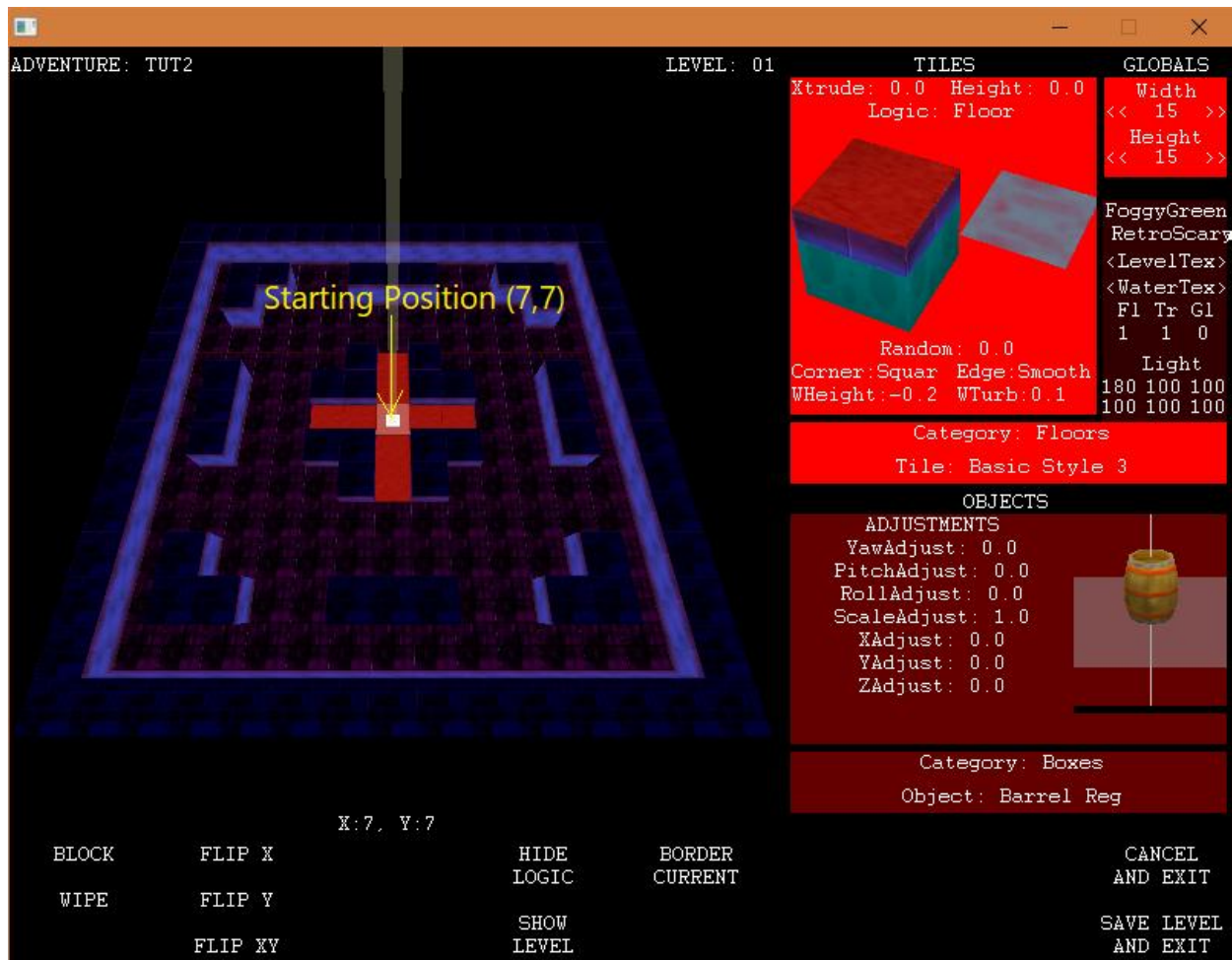
Next, move to the global settings below the size. The first line is weather... click to cycle until you get "FoggyGreen". The next line is music... click to cycle until you get "RetroScary".

The next line ("<LEVELTEX>") is the texture to use for the level. Left-Click ">" to cycle forward through available textures or "<" to do vice versa. Just keep on clicking ">", you'll see the level changing in the viewer... until you get to the spooky texture.

Note: don't right-click on the <LEVELTEX> button yet - this will go into the advanced custom texture option.

Now look at the light section. Let's make our level darker. In the first set of values, set all the three values to 100. It represents normal directional light (brightens only certain sides of objects). We'll leave the other settings as they are for now.

Now, use the basic tile selector and select a basic Style 1 0.5 Height Wall and 1.0 Height Wall to draw the following pattern. Use the coordinate viewer to ensure that the center of your structure is the position (7,7) which we will use as our starting position (so write it down on your pad of paper). I have used Height 0.5 for the inner walls and Height 1.0 for the outer walls. Then I select the Floor Style 3 to draw a floor portion at the center of the structure.



Got the above level?

Now we will modify a tile to try out some advanced options. You just drew the carpet-like center of the level. We want to make the transition from spooky floor to carpet floor nicer.

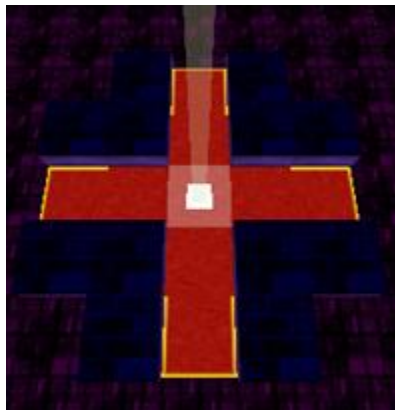
Move the cursor to the position X=7 Y=10, i.e. two spots below your starting position. Right-click on that tile. You will see the carpet floor tile in your Advanced Tile Tweaker change back to the default spooky floor tile: Right-Clicking a tile "picks it up" and selects it as your tile for current use.

Now, we want to texture some tiles a little. Left click on the top part of the Tile in the Tweaker Viewer (yellow circle in picture below). This allows us to change the top texture of that tile. The Editor View will change and show a grid of available textures. Choose the texture in black box.

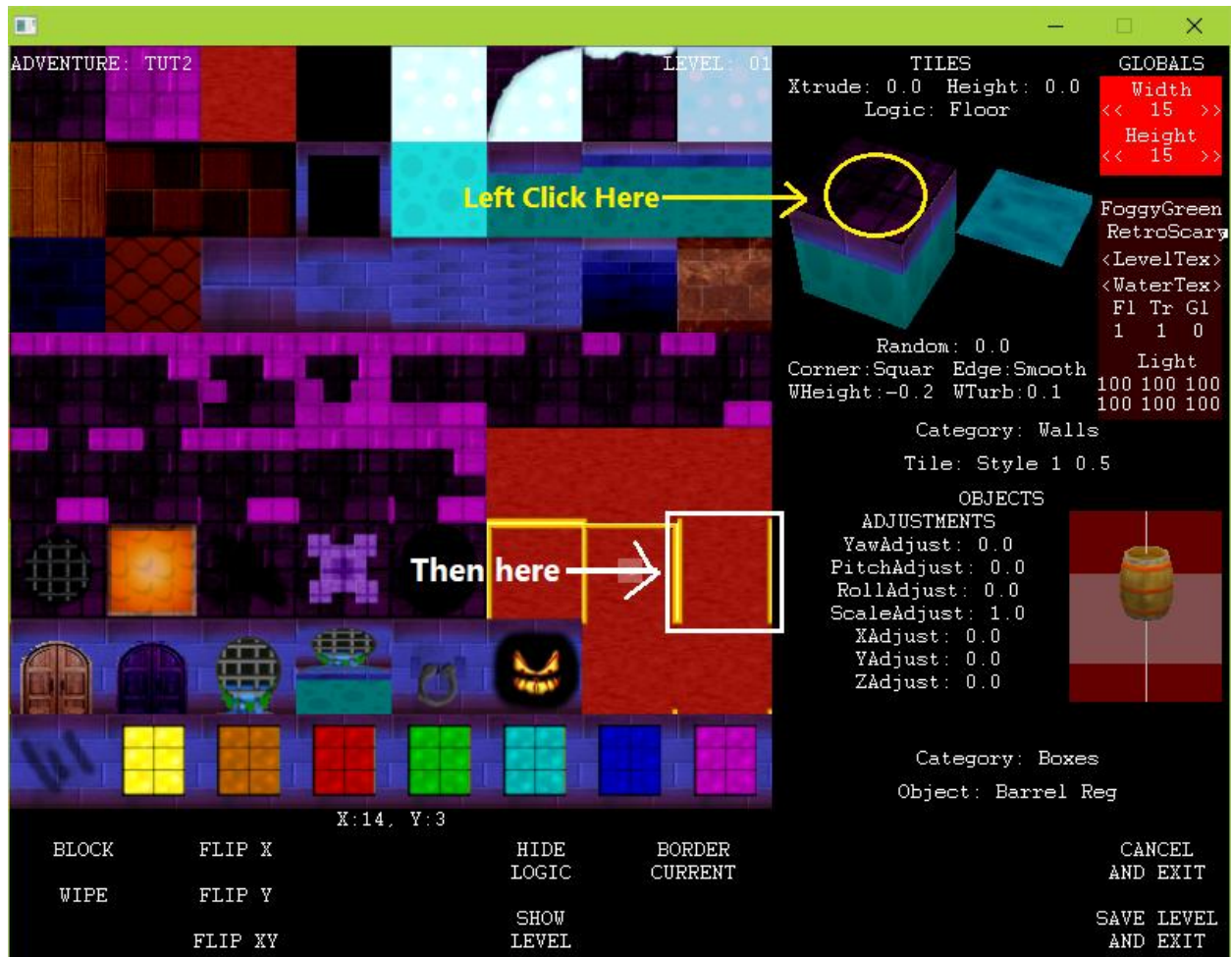


Alright, place this tile at position (7,9) and you have a nice transition. However, if we try the same thing for the other four sides, it doesn't look right, since the texture isn't "turned" in the right direction. No problem, this time we right-click on the top part of the Tile Tweak window... this rotates the top part of the texture. Rotate and place the remaining three transitions.

Your result should look as follows:

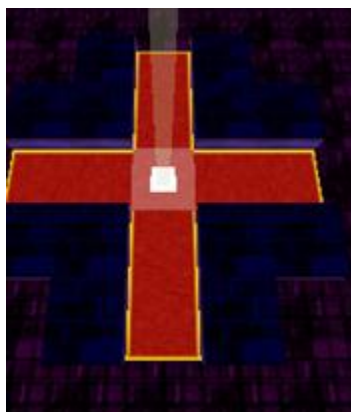


However, look it, it isn't looking good from inside. We again left click our top tile texture and select the one in white box.



Now place this tile at positions (7,6) and (7,8). But if we position it like this in positions (6,7) and (8,7), it doesn't look right, so right click the texture to rotate it and place it on these positions.

It should now look like this:



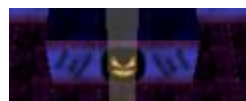


We can do the same thing for the sides of walls. Right-Click to “pick up” the wall at position (7,2). Left-Click on the side of the tile in the Tweak Viewer, select e.g. the “ghost” texture, then place the modified tile at (7,2).



You can also rotate the sides. Now again right-click to “pick up” the wall at position (8,2). Left-Click on the side of the tile in the Tweak Viewer, select the “nail scratch” texture, then place the modified tile at (8,2). Now right click the side 4 times to “flip it 180 degrees”. Place it on (6,2).

It should look like this:

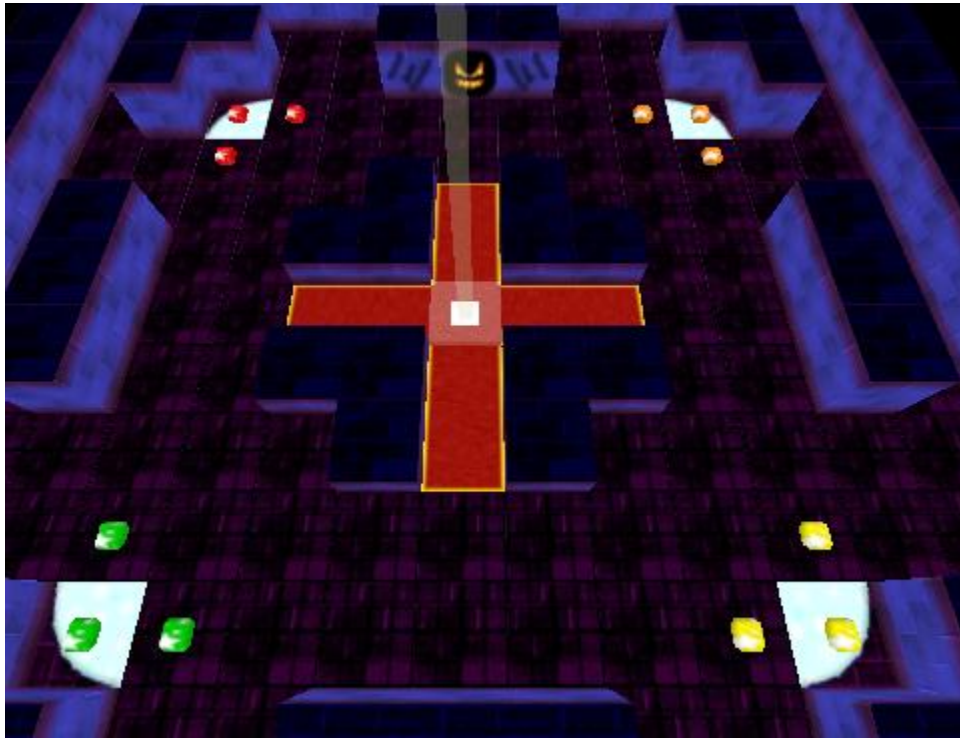


Finally, let’s place some Ice Corners to slide around a little. From the basic Tile Selector, select Category “Ice” and Tile “Ice Corner”. Place in the upper/left corner, then right-click on the top of the tile in the Tile Tweak Window to rotate the corner into the other three positions.



We’ve only looked at selecting and rotating top/side textures of a tile - clearly there are other options in the Tile Tweak Window. Let’s leave them for now.

Next, let's try some basic tweaks with object. In the Object Selector, select Items/Gems again. Place a few gems, then click on the "Colour" line to change the colour of the gem, and place a few more. Try placing twelve gems as shown in the given colours:



Let's do one more thing. In the Object Selector, go to the Monster Category and select the Chomper. We will tweak the "Special" line for this one, and set it from "----" to "Ghost" (the ghostly chomper can travel through gems). Place it at position (7,13).



All done. Save the level.

Now in the Master Editor, give the adventure a name and description, and set the starting coordinates to (7,7).

You'll note that we don't have a star in this adventure. We want this to be a "gem collecting" adventure, so set the Adventure Goal to "Collect All Gems", and then compile the adventure.

Well done, you can now go and play this adventure in the player.